

JUNE 10, 2010

Rejuvenating Cities Together

HAMDAN ABDUL MAJEED

thinkCITY



**WE ARE A
SOCIAL PURPOSE
ORGANISATION
DRIVEN BY
IMPACT IN
MALAYSIA**

We want to make cities people-friendly and resilient by being a catalyst for change in the way cities are planned, curated, developed, and celebrated.



what we do

Placemaking

- Area improvement plan / Strategic placemaking
- Public realm improvement
- Space activation
- Place management

Resilience

- Nature-based climate adaptation
- Health & safety solutions
- Housing

Analytics

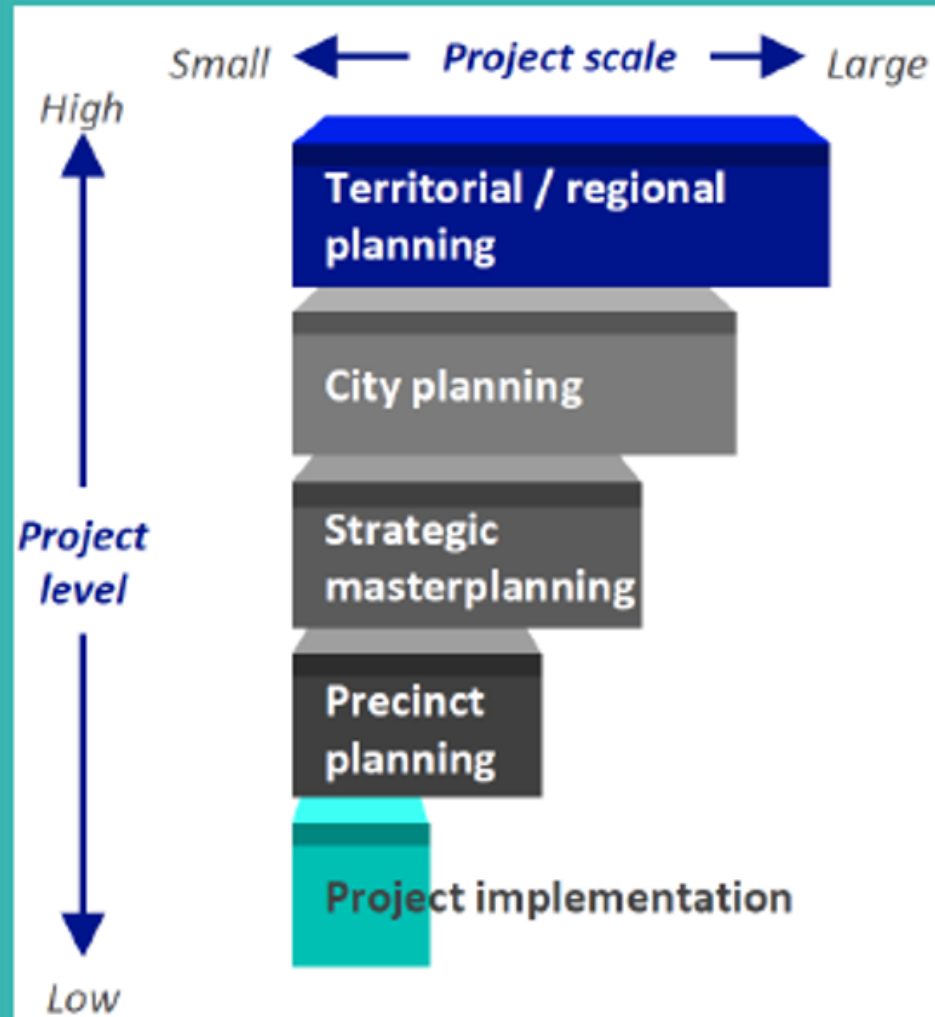
- Baseline studies / Territorial analysis
- Strategic plans / documents
- Urban data analytics platform

Conservation

- Area conservation / Conservation management plan
- Conservation programme management & coordination
- Museology / Content curation
- Adaptive reuse strategy & management

how we're different

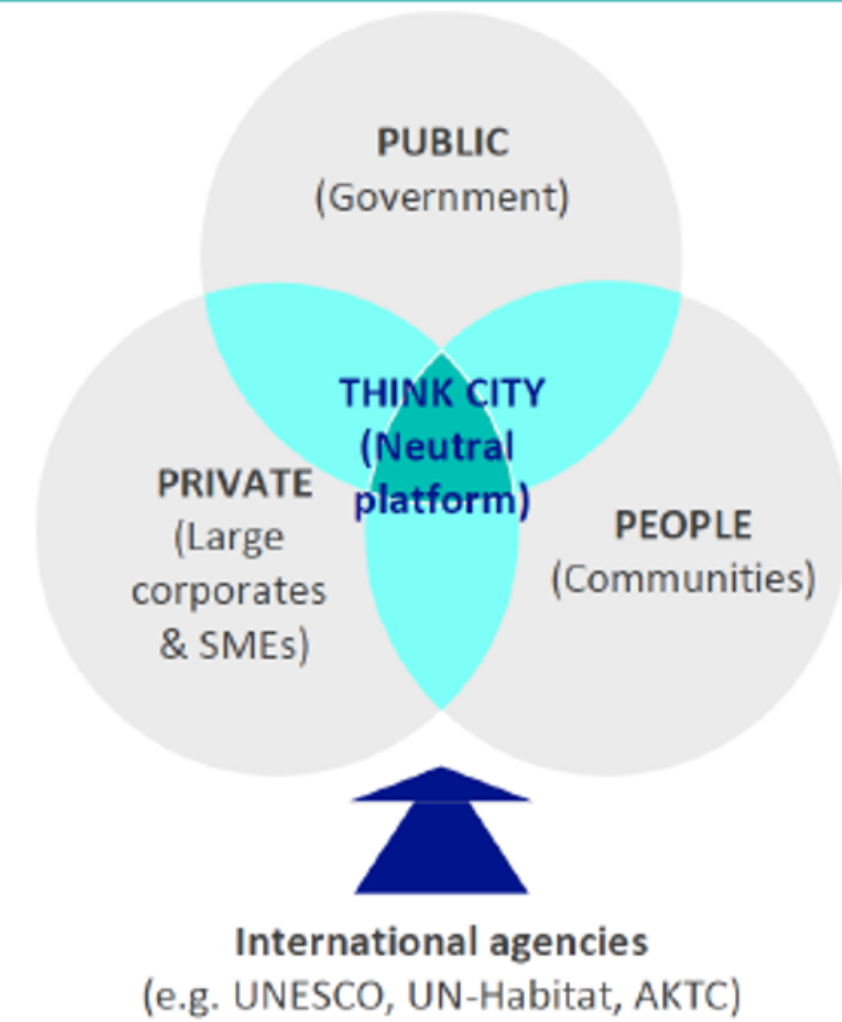
'Think - and -do tank'
operating on a vast range
and scale



Evidence-based, learning
approach; an experimental
organization



Proven neutral platform that
creates synergy between the
public, private & people



FOREIGN AFFAIRS
CURRENT ISSUE
May/June 2020

Magazine ▾ Regions ▾ Topics ▾ Collections ▾ Book Reviews ▾ More ▾

The Pandemic Does Not Spell the End for Cities

Urban Planners Should Embrace—Not Fear—Density

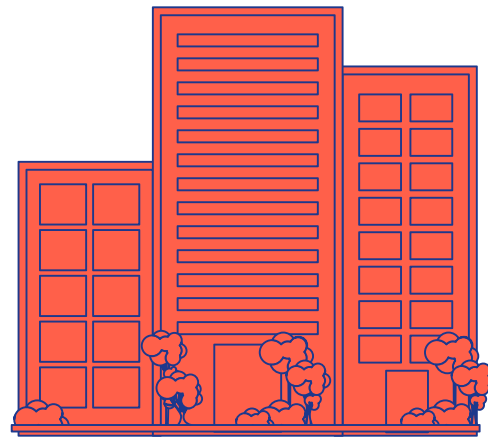
By [Jennifer Keesmaat](#) May 28, 2020

- 🔖
- 📄
- 🔖
- 🐦
- 📌
- ✉
- 🔗

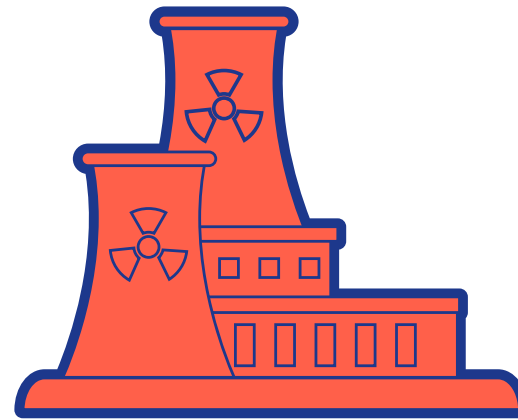


A pedestrian crosses a nearly deserted Times Square in New York City, May 2020
Stefan Falke / laif / Redux

Cities are engines of innovation, growth and prosperity and will continue to be, post-COVID



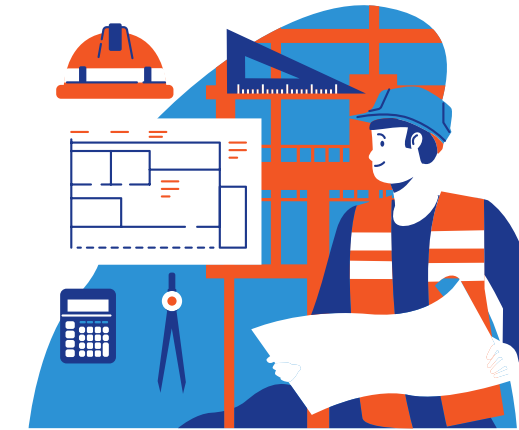
55%
of the world's
population and 76%
of Malaysians live
in urban areas today.
68% of the world will
live in urban areas by
2050.



**No country has grown
to middle-income
status without
industrialisation
and urbanisation**



70-80%
of
the world's GDP is
generated in cities



95%
of
urban expansion in
the coming decades
will take place in the
developing
world

- Cities benefit from agglomeration economies due to the density and clustering of firms and people
- The scale and network effects of agglomeration economies lead to greater innovation, growth, and prosperity
- Post-COVID, cities will continue to be engines of prosperity

the city & the pandemic

Illustrative City Ecosystem

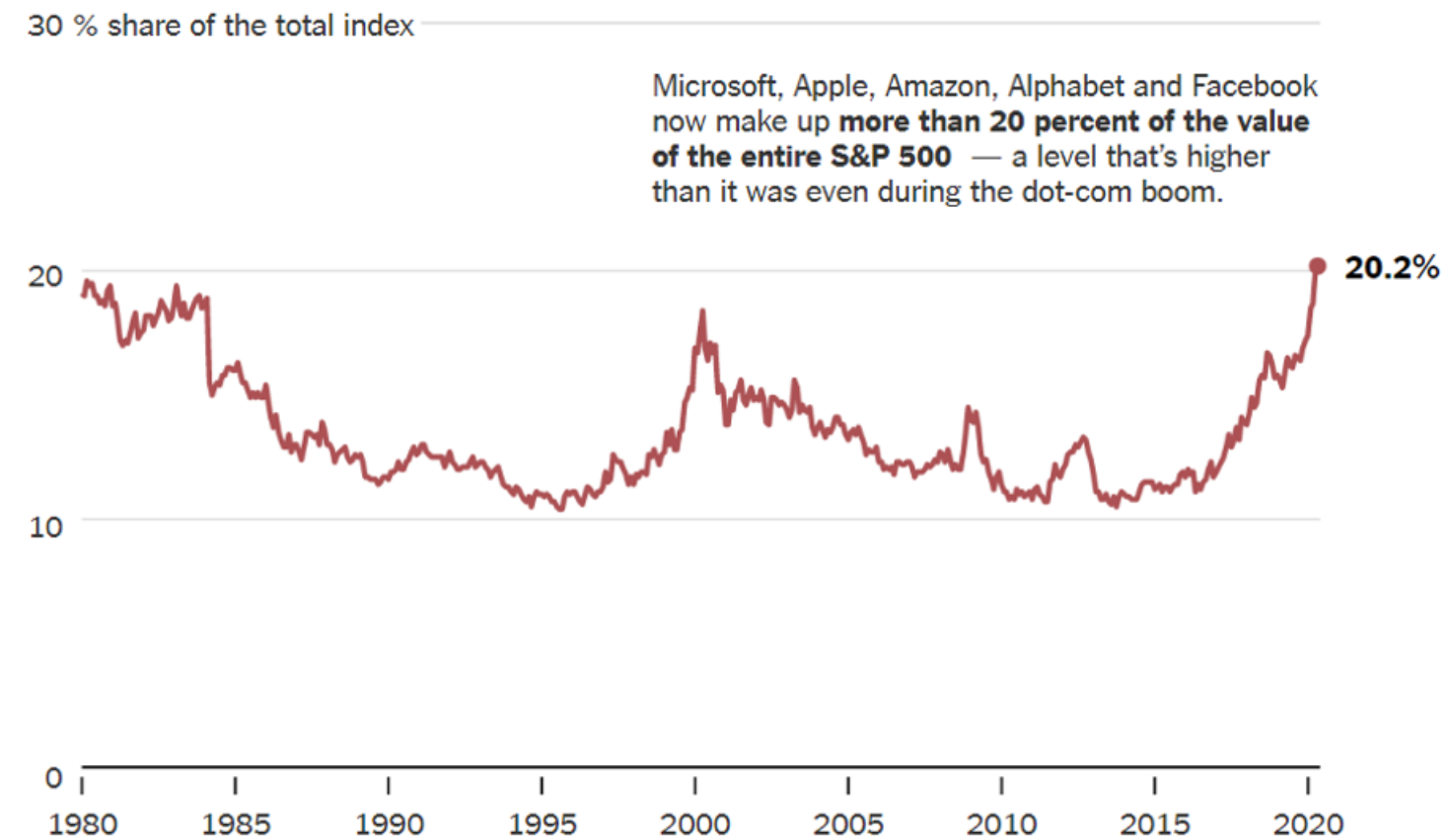
Cities must be understood as complex systems with people at the heart of cities

Utilities, technology, communications and transportation



COVID has accelerated tech trends that were already in place

Market capitalization of five largest S&P 500 companies



By The New York Times | Source: Goldman Sachs

diginomica

Microsoft's having 'a good war' so far as COVID-19 fuels "2 years worth of digital transformation in 2 months"

By Stuart Lauchlan April 30, 2020

Technology has the potential to widen the digital divide, but it can also narrow the gap

Highlight

Economic inequality hinders Malaysia's high-income aspirations

Chester Tay & Amir Ridzwan Ismail / The Edge
October 22, 2018 09:16 am +08

Malaysia's widening income gap between rich and poor

CORPORATE NEWS

Tuesday, 16 Oct 2018



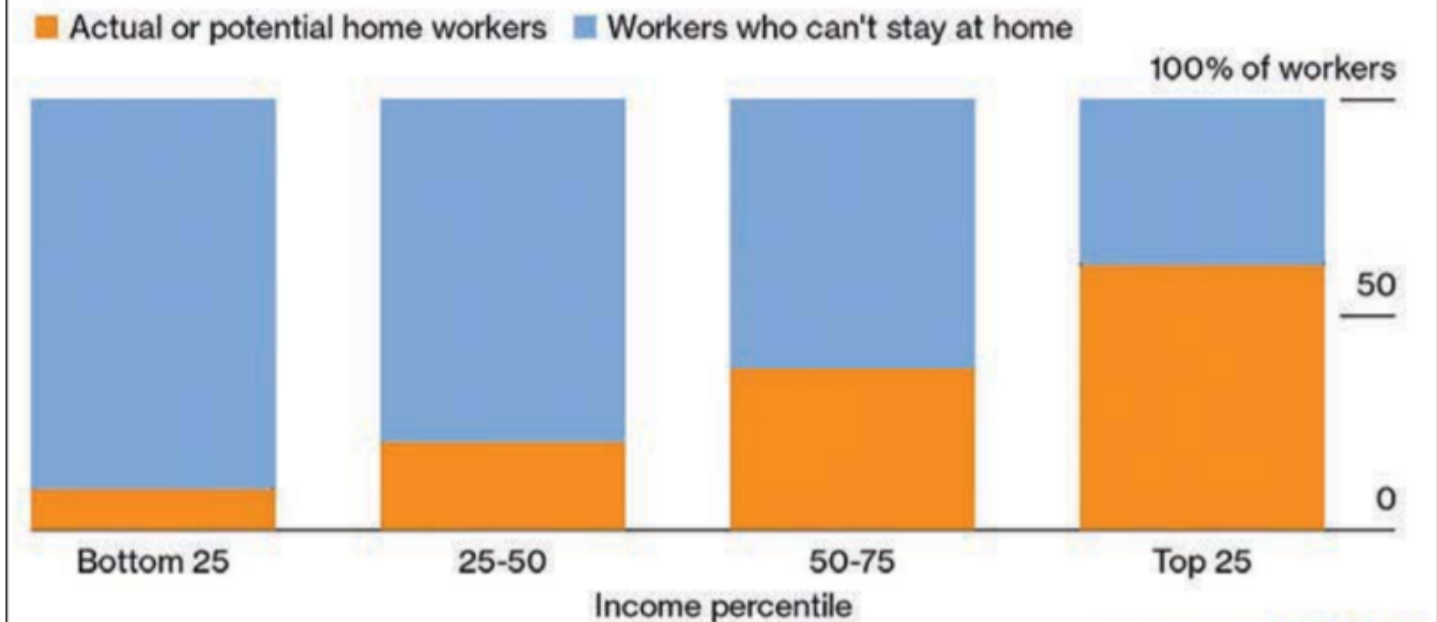
Launch of State of Households 2018: Different Realities. From left to right: Datuk Hisham Hamdan, Dr Nungsari Ahmad Radhi, Allen Ng, Dr Suraya Ismail, Junaidi Mansor.

Location Data Says It All: Staying at Home During Coronavirus Is a Luxury

By Jennifer Valentino-DeVries, Denise Lu and Gabriel J.X. Dance April 3, 2020

Only the Rich Work From Home

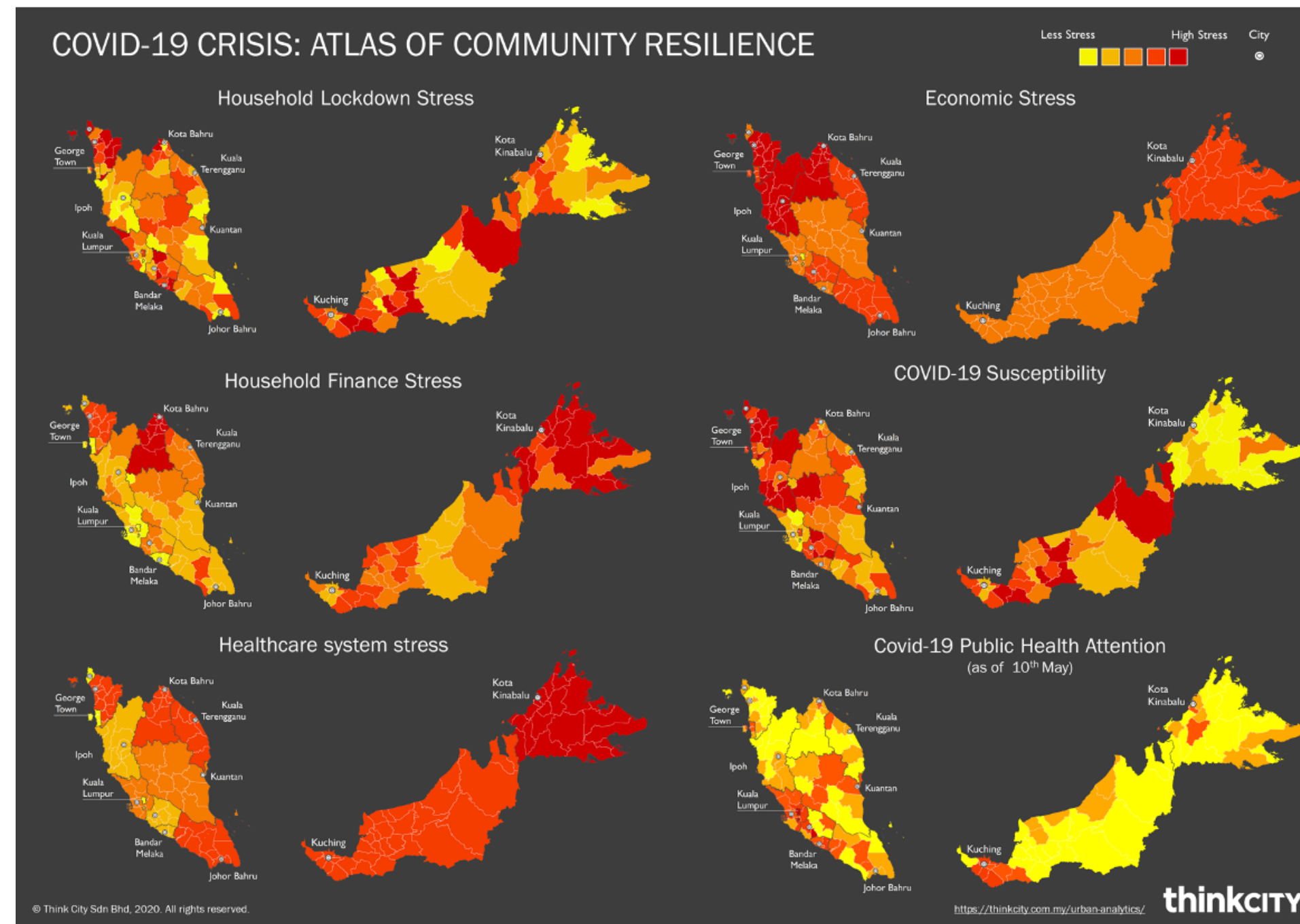
The less you earn, the less self-isolation is an option.



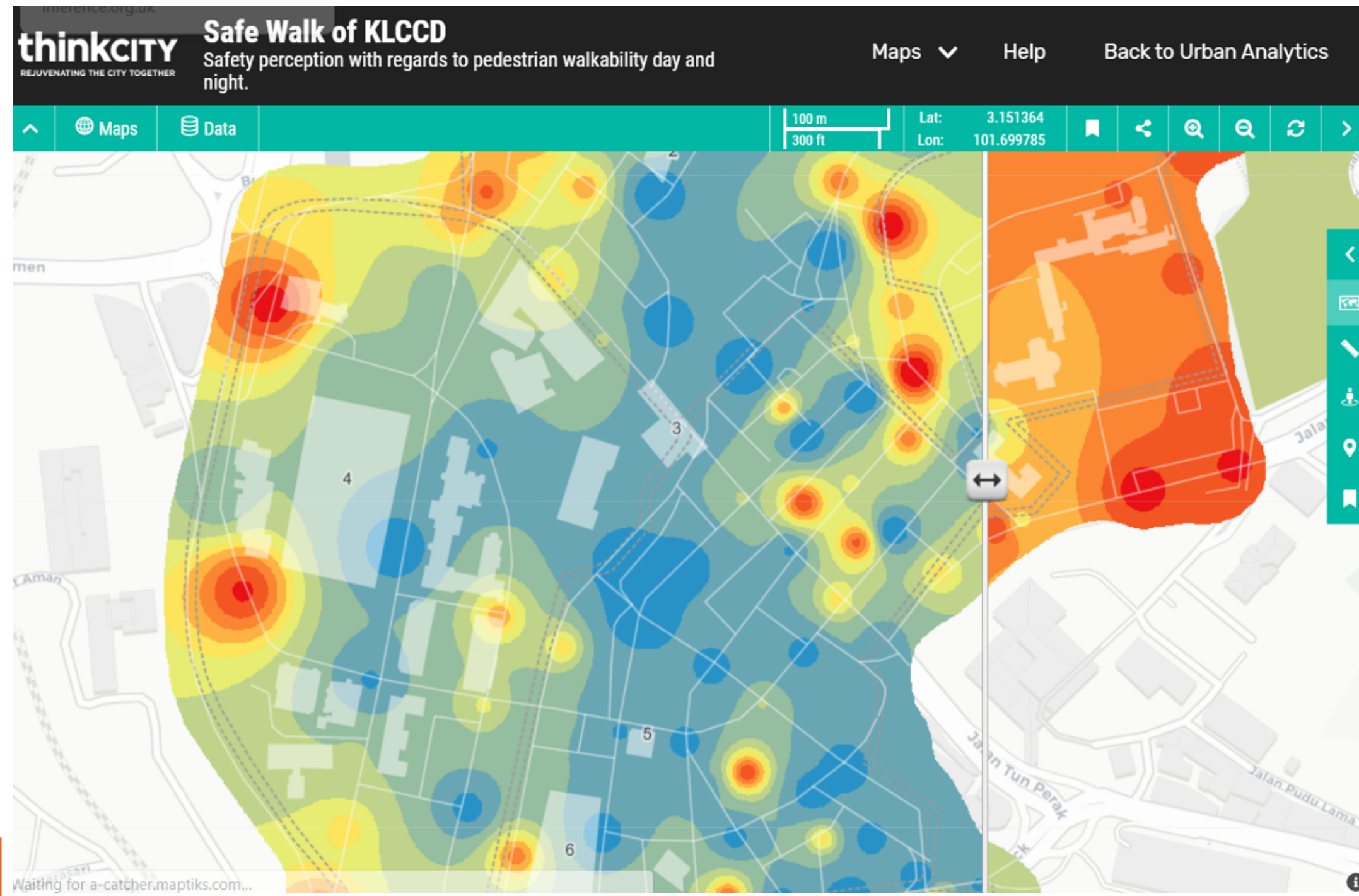
Source: U.S. Bureau of Labor Statistics

BloombergOpinion

Better data can improve the understanding of our cities and communities



Think City uses a data-driven approach to understand cities and communities: Safe walk of the inner KL Creative & Cultural District



Safe Walk of KLCCD

Slide right for daytime analysis and left for night-time analysis.

A study by Think City shows that **15%** of public respondents didn't feel safe during the day, this number rose to **63%** in the evening.

In 2018, Think City assessed the 1-km radius around Masjid Jamek in terms of **walkability and overall comfort** throughout the day. The results paint an interesting picture, as shown in these two maps, with **blue indicating good scores** and **red indicating bad scores**.

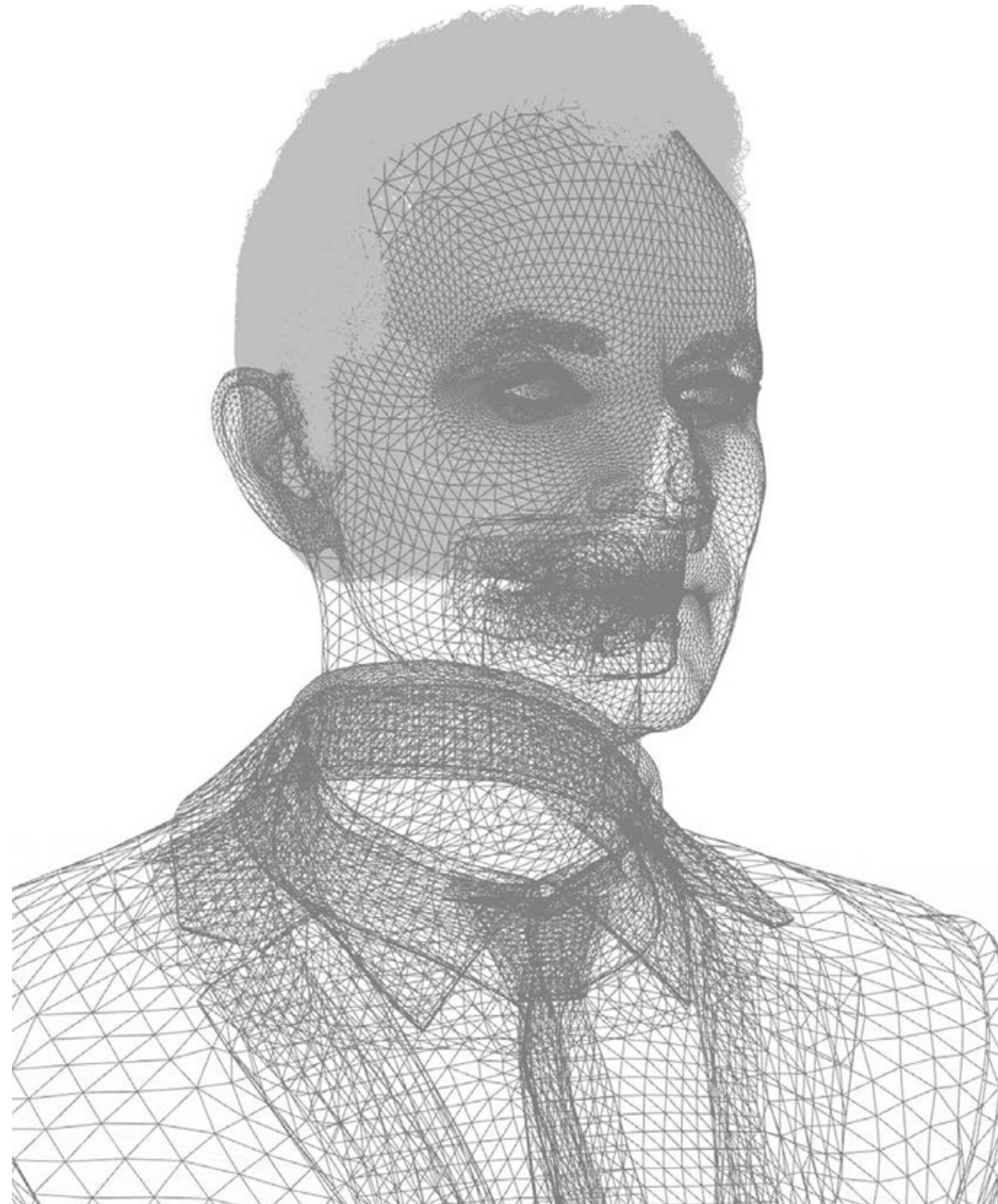
Methodology

The assessment tool was adapted from the West Perth SAFE Assessment. 32 aspects within the categories of **Safety, Accessibility, Friendliness, Efficiency, and Inclusivity** were assessed for over 200 points in Downtown KL. Each point was audited 4 times on a weekday and 2 times over the weekend. Period of audit: Wednesdays, Thursdays, Saturdays and Sundays in October 2018.

Significant Trends and Key Insights

► Through a day and night comparison of the same area, we can see a central node of blue emerging. This path links the two major transit stations in Downtown KL – LRT Masjid Jamek in the north and LRT Pasar Seni in the south. This vibrant stretch is constantly used by pedestrians, relatively well-maintained, and is busy with commercial activity, even at night thanks to an active night-time economy. Notable

Technology also equips cities for the new normal in the post-Covid world



Facial recognition for tracing & security measures



Internet of Things



Protective Tech in Public Spaces

cities post-covid

While concerns over the far-reaching capabilities of technology are increasing, there is hope



“This idea that we can control our own data and our digital identity is not a figment of our imagination or a wild hope for the future, it’s actually possible.”

- Brittany Kaiser, Data Transparency Advocate



Anti-Bullying Online Gaming Communities



Data Privacy

A smart city is not just about investing in technology, it is also about investing in people and communities

WIRED

AARIAN MARSHALL TRANSPORTATION 05.07.2020 06:38 PM

Alphabet's Sidewalk Labs Scraps Its Ambitious Toronto Project

The Google sibling envisioned a tech-enabled and eco-friendly neighborhood. But residents rebelled over plans to collect and use their data, among other things.



Sidewalk Labs proposed to redevelop a 12-acre parcel of Toronto's waterfront, along Lake Ontario. COURTESY OF SIDEWALK LABS



“...as unprecedented economic uncertainty has set in around the world and in the Toronto real estate market, it has become too difficult to make the 12-acre project financially viable without sacrificing core parts of the plan we had developed together with Waterfront Toronto to build a truly inclusive, sustainable community.”

Dan Doctoroff, Sidewalk Labs CEO

Urban development must continue to consider all threats to human wellbeing



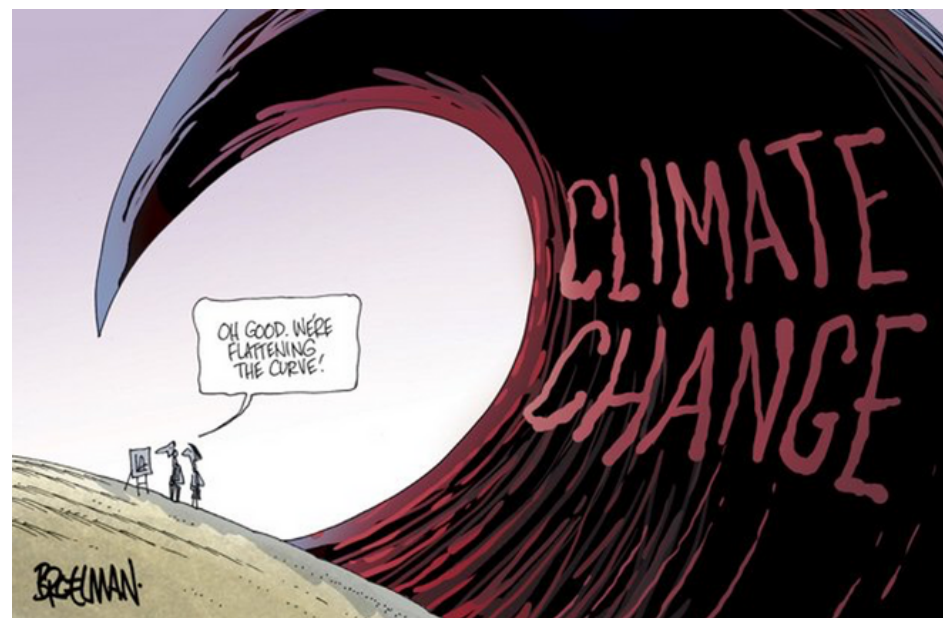
Dwindling Resources



Income Inequality & Economic Recovery



Pollution



Climate Change



Disease

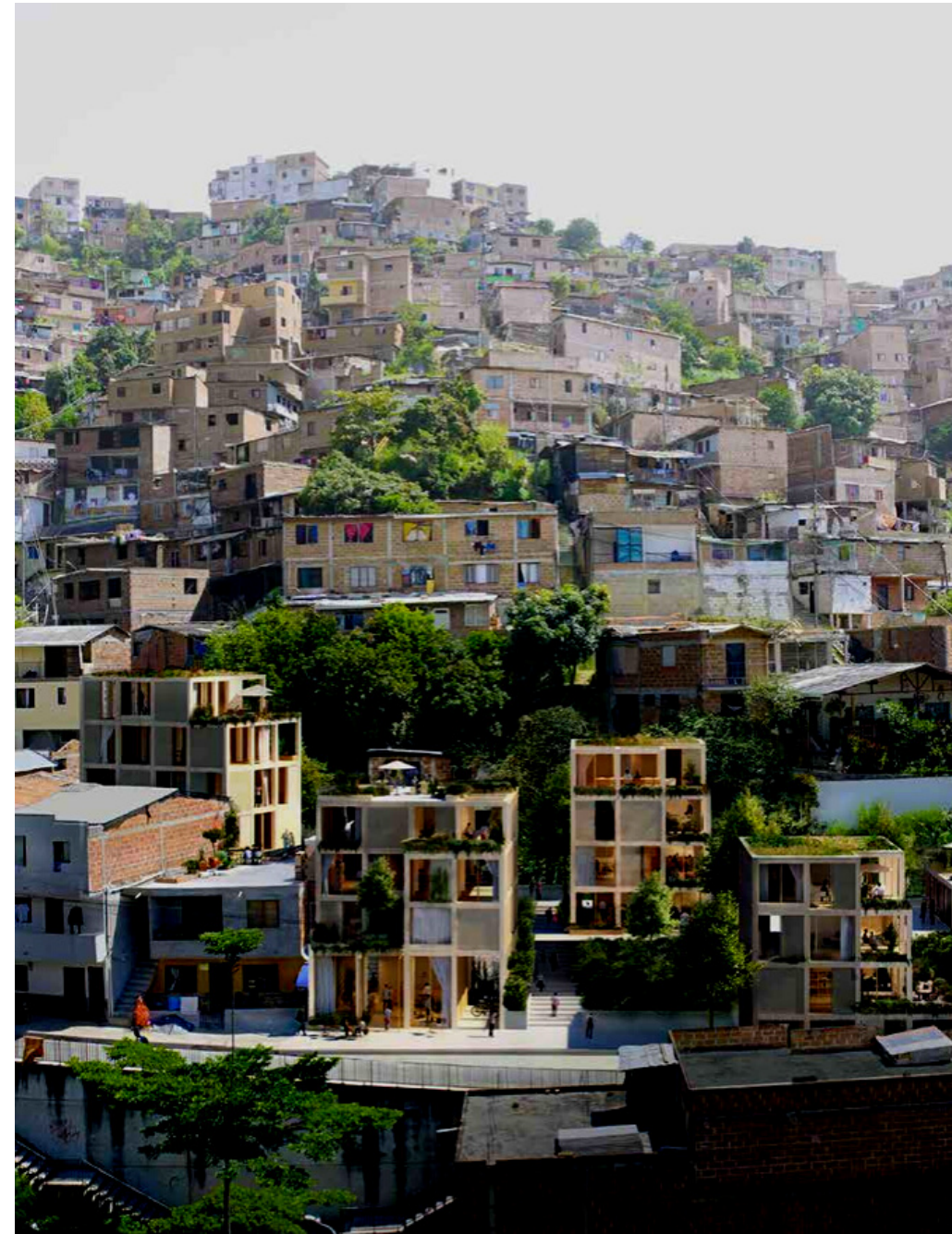


War / Terrorism

A smart city must be a resilient, liveable and people-friendly city



Urban Farming Facilities



Affordable Co-Living in Self-Sufficient Buildings



Disaster-Proof Architecture

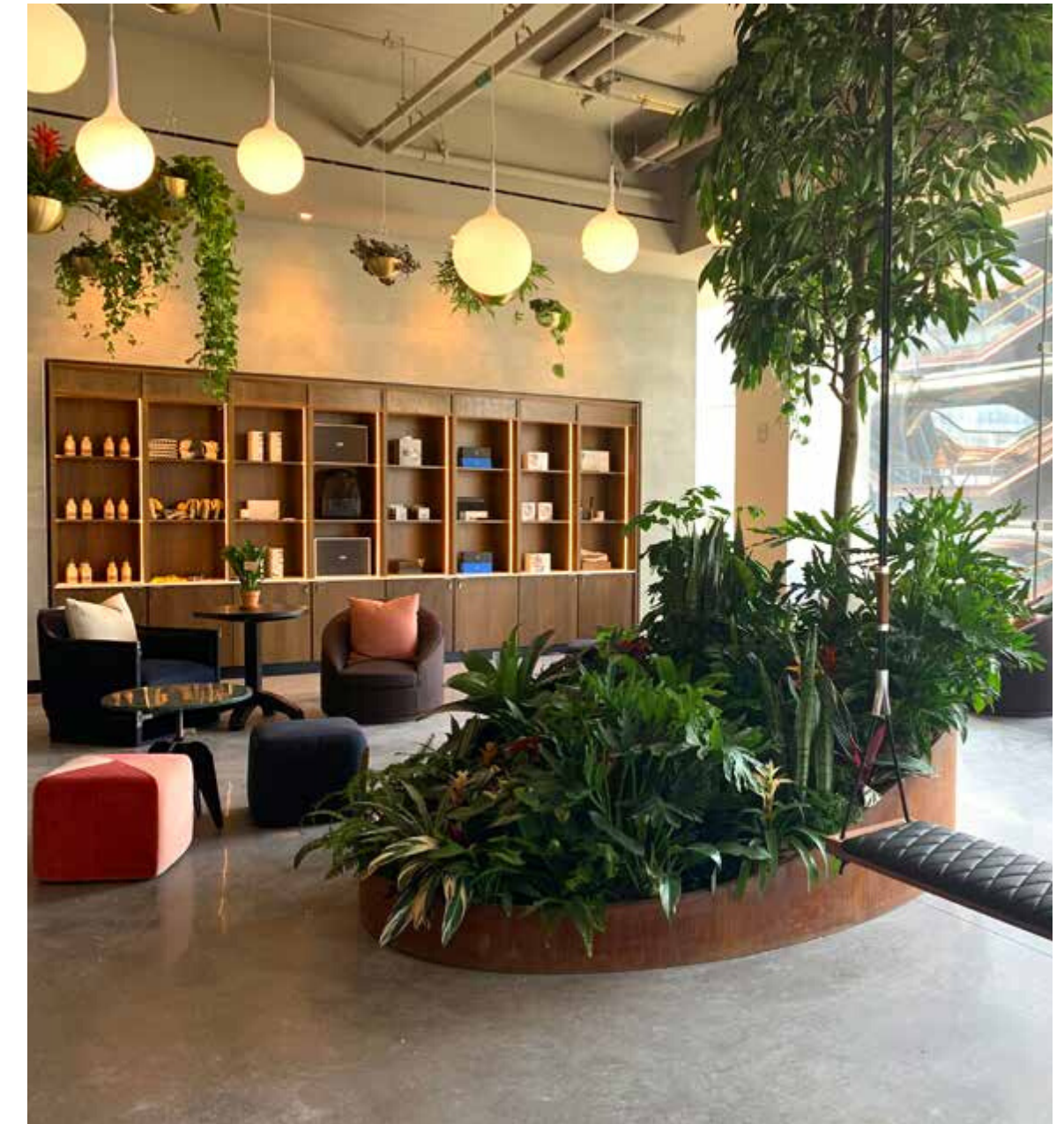
A smart city must be a resilient, liveable and people-friendly city



Wellness Architecture



Community Neighbourhoods



Healing Public Spaces

Thank You

Connect with us!

www.thinkcity.com.my

 **Think City**

 **@mythinkcity**

 **@mythinkcity**

thinkCITY

REJUVENATING CITIES TOGETHER

